

# HUX ELECTRONICS

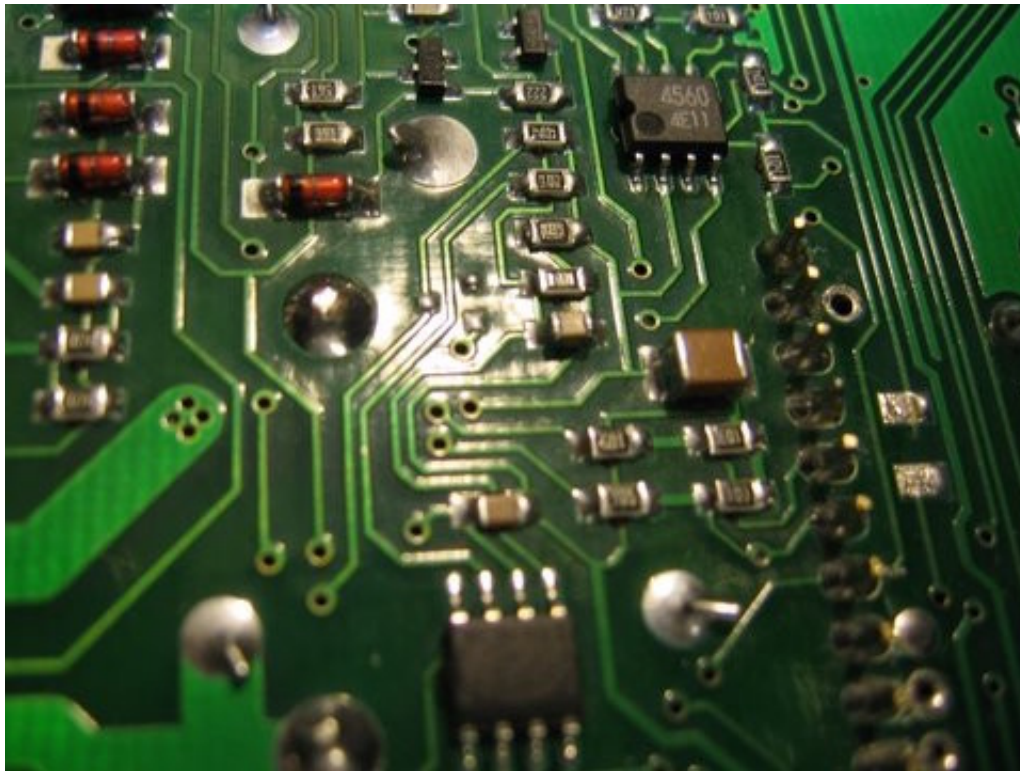
PO Box 6160, Mitchelton, Qld

Phone/Fax 07 33557555, Email [admin@hux.com.au](mailto:admin@hux.com.au)

## RCF ART 315 and 325 (and others) Powered Speaker Box Mute Capacitor

The mute capacitor in the current series of RCF ART powered speaker boxes is prone to misbehaving. The problem is caused by the capacitor being reverse biased on “power off” and the original component used throws in the towel after a while.

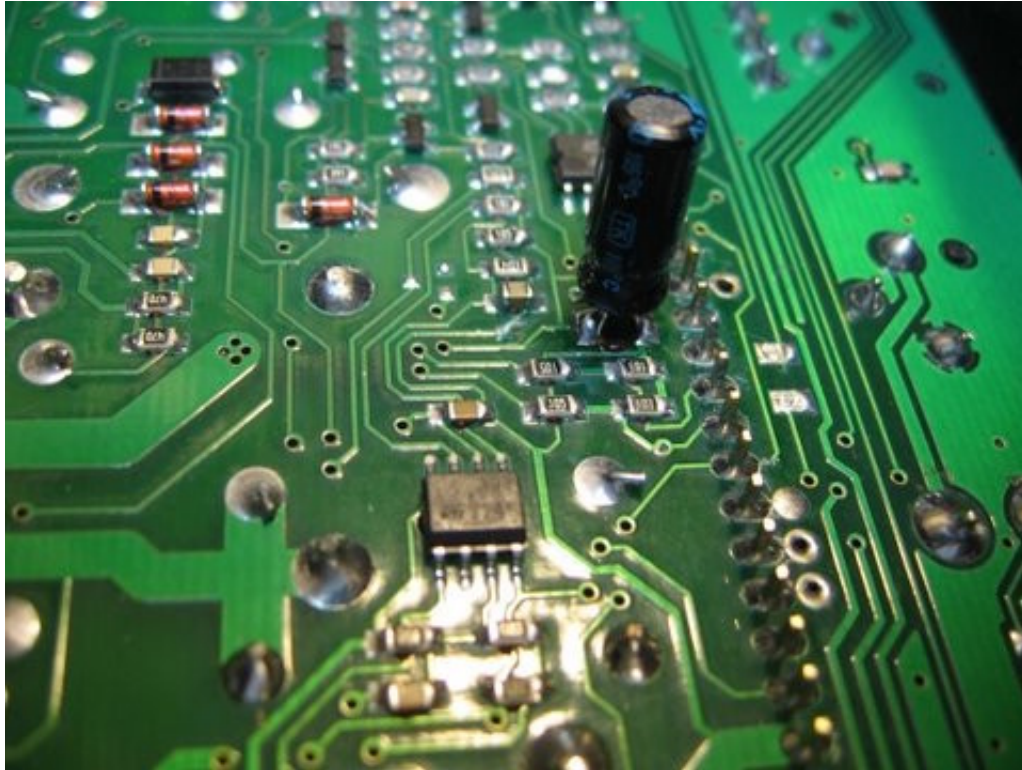
The following repair is quick and easy. I remove the original surface mount capacitor and fit a standard 105 degree 10uF 25 volt electrolytic capacitor in its place. Standard size (non SMD) capacitors should handle the reverse bias condition a little better and so far I have seen not returns on units that I have modified.



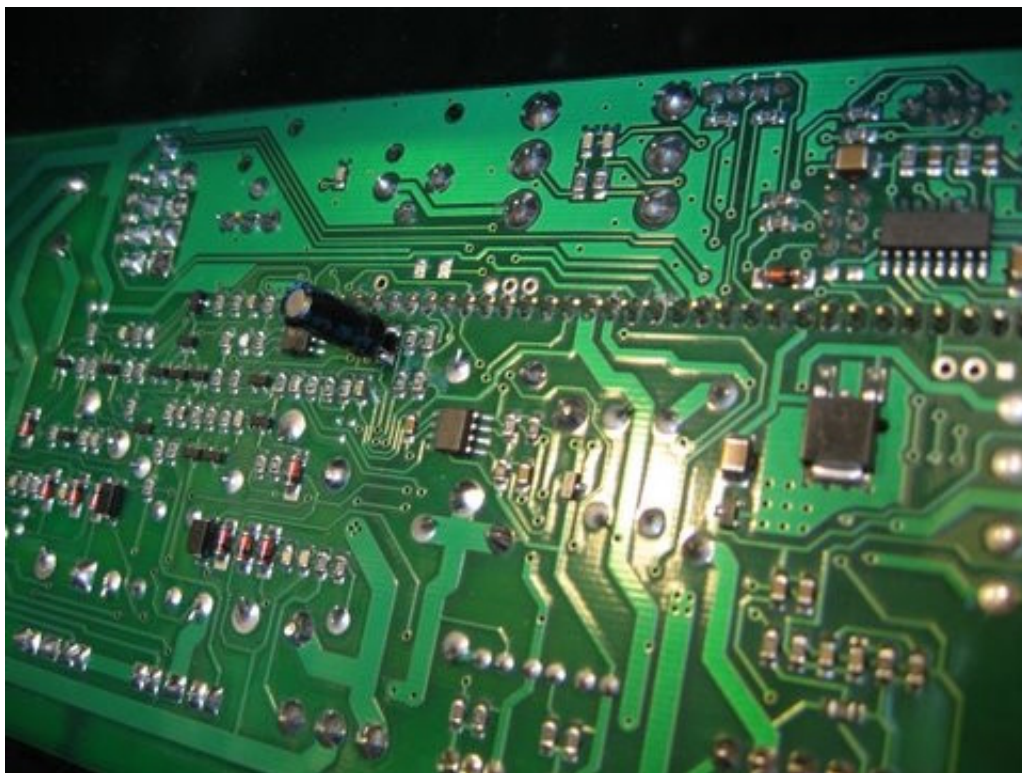
Locate the original capacitor in between the two op amp IC's near the control card PCB pins (the pins on the right hand side of this image).

De-solder the original capacitor and discard.

Caution : The HT rails in this power amplifier section can stay energised for a considerable period of time, either discharge all of the large power supply capacitors with a resistor (100 ohms 5 watts or thereabouts) or work with caution and don't accidentally short out sections of the power amp module.



Fit a 105 degree 10uF 25 volt electrolytic capacitor where the SMD capacitor was, the negative pin faces the control card pins (right hand side of this image).



An overview shot showing the new capacitor in place.

Regards, Warren Huck, 23/03/08